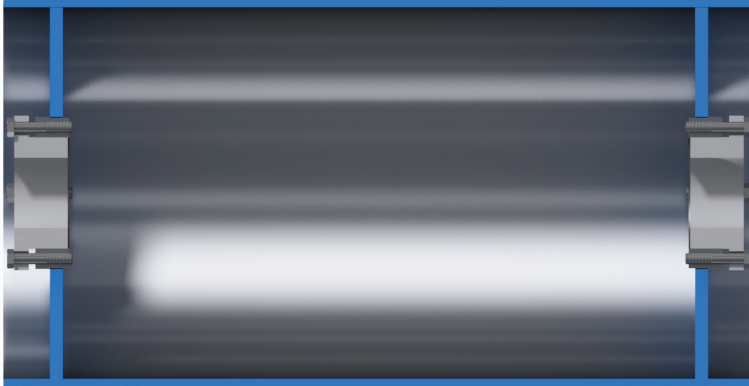




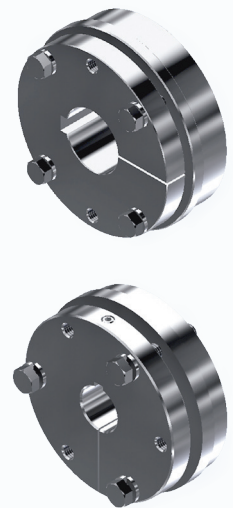
MAGNETIC DRUM PULLEY

Luff's Magnetic Pulley shell is made of stainless steel and the core is constructed from powerful, non-deteriorating magnetic ceramic blocks that produce a strong magnetic field

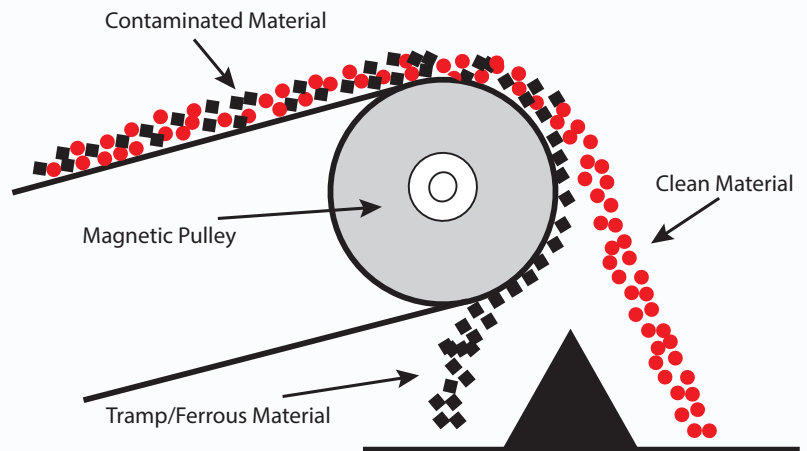


- The primary function of a magnetic pulley is the extraction and separation of tramp iron and similar metals from the non-magnetic material being conveyed.
- Removing metals from material can help protect equipment like crushers, grinders, shredders, pulverizers and other valuable machinery.

- Available in any diameter or face width required the pulley can be custom manufactured to the requirements of your application.
- Mounted on a high tensile steel shaft and keyed to the customers drive requirements, the Magnetic Drum Pulley is available in QD, XT, or Keyless hub styles.



Choose from QD, XT or KEYLESS Hub Styles



Luff Industries Ltd.
235010 Wrangler Road
Rocky View, (Calgary) Alberta, T1X 0K3

TF: 1.888.349.LUFF (5833)
P: 403.279.3555
F: 403.279.5709

Conveying Performance

info@luffindustries.com
www.luffindustries.com