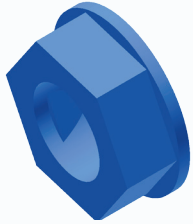
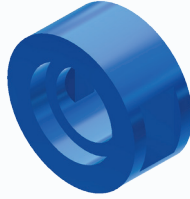


RETROFIT ROLLERS



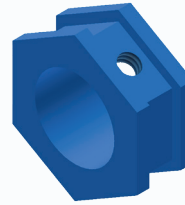
0.9375" HEX
NO SHOULDER



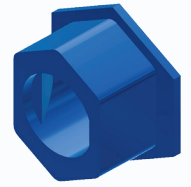
PIONEER



1.25" HEX
NO SHOULDER

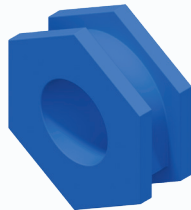


1.125" HEX
1.250" HEX

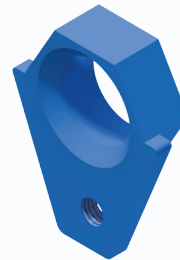


FORANO

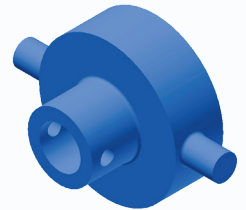
Luff Industries is able to retrofit any style of steel or impact roller.



2" HEX
(HEX/HEX & HEX/ROUND)



2" HEX with LOCKING TAB



LIMBEROLL



High Moisture Seal available on all retrofits

Luff has a full line of adapters available that can be retrofitted to the existing frame. These retrofits offer convenient adaptability when moving to Luff's high quality line of products.

2 Year Warranty

WE RETROFIT ALL MANUFACTURERS ROLLERS, INCLUDING:

- | | |
|--------------------------------|------------|
| FMC | Bucyrus |
| Nordstrong | Melco |
| Assinck | Haak |
| Superior Industries | Precismeca |
| Stephens-Adamson | Rexnord |
| Joy Global | Douglas |
| Continental Conveyor Canada | Yeloroll |
| Sandvik | Enduride |
| Power Screen | Limberoll |
| Precision Pulley & Idler (PPI) | |



Luff Industries Ltd.
235010 Wrangler Road
Rocky View, (Calgary) Alberta, T1X 0K3

TF: 1.888.349.LUFF (5833)
P: 403.279.3555
F: 403.279.5709

Conveying Performance

info@luffindustries.com
www.luffindustries.com