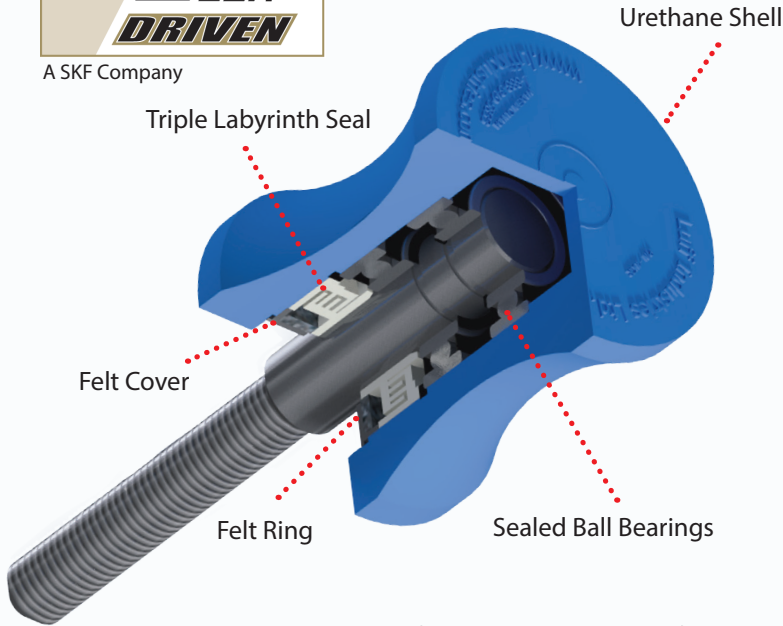


# URETHANE GUIDE ROLLERS

## The Solution to Your Belt Tracking Problems



A SKF Company



Made of a composite urethane material Luff guide rollers provide improved strength, durability and corrosion resistance over conventional steel guide rollers

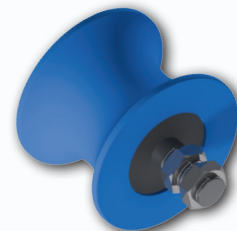


- Reduce the chance of severe belt damage from sharp edges caused by roller wear.
- The hourglass shape offers the ultimate belt control by preventing the belt from climbing up and over the guide roller.
- Full length threading for unlimited height adjustment.
- Electroplated shafts for rust resistance
- Easy installation (perpendicular to belt)
- 6UGR-E are built specifically for heavy belt conveyor applications including mining, ship loading and aggregate.



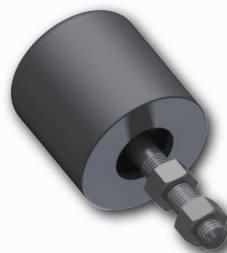
### 4UGR

Contains two 6205 sealed ball bearings with a Luff Triple Labyrinth Seal for added protection. 25 mm shaft machined & threaded to 3/4" UNC.



### 6UGR-E

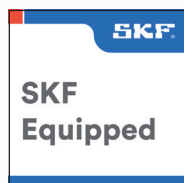
Contains two 6306 2RS C3 sealed ball bearings and Luff's patented Triple Labyrinth sealing arrangement. 30mm shaft machined & threaded to 1 1/8" UNC.



### 5UGR/6UGR Stub

Urethane sidewall belt stub roller available for corrugated side wall belt applications.

**Full 2 Year Warranty**



**Luff Industries Ltd.**  
235010 Wrangler Road  
Rocky View, (Calgary) Alberta, T1X 0K3

TF: 1.888.349.LUFF (5833)

P: 403.279.3555

F: 403.279.5709

**Conveying Performance**

[info@luffindustries.com](mailto:info@luffindustries.com)  
[www.luffindustries.com](http://www.luffindustries.com)